

Holistic Diagnosis of the Territory

Analysis at different levels of the Leicestershire context where the company Papillon Bleu is located.



History

Source: Story of Leicester, 2022

From the early 19th century to the end of the 20th century the main industries in Leicester were:



Hosiery

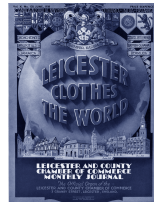


Footwear



Engineering

Names such as Corah, Wolsey, Bentley, Stibbe, the British United Shoe Machinery Company and the British Shoe Corporation were well known nationally and internationally.



1962

Leicester's economy was strong and there was work for everyone in a wide variety of industries. This period is remembered as a **golden age**



2019

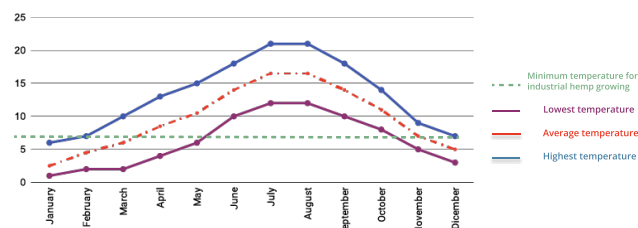
Presentation of the **European Green Deal 2019**

Roadmap for making the EU's economy sustainable by turning climate and environmental challenges into opportunities across all policy areas

Temperature

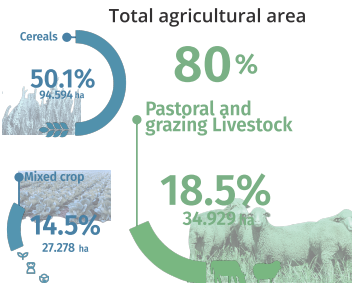
Average temperature per year

Source: World weather online, 2022



Agriculture and breeding

Source: Leicestershire County Council, 2018



17.2 million Ha

Agricultural Area in UK 800 Ha
Hemp cultivation in UK 0.005 %
Percentage of land for industrial hemp



Industrial Hemp

Source: Gov UK, 2021; Hempen, 2021

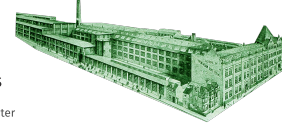
- Strict guidelines and rules.
- It should be subsidised by the UK government
- Farmers will need to find funding from elsewhere
- Licences are regularly issued too late
- Farmers don't know how to manage the crop after it's totally grown
- Farmers are relying on word of mouth from colleagues outside the UK

Textile district

Source: Visit Leicester, 2022; MDS, 2020

1.500 firms in Leicester and Leicestershire

700 factories that produce one million garments a week in Leicester



The second largest

Concentration of textile firms in the country outside of Manchester

The sector comprises of over 2.000 local businesses of which three-quarters are 'micro'-sized

NEXT BODEN MISGUIDED

Strategic position

Source: Leicester and Leicestershire enterprise partnership, 2021



The second largest cargo airport in the UK



Main train lines run through Leicestershire from south to north and east to west

Produces



£1.2 bn of GVA

Clusters



Leicestershire is the 4th UK's Largest textiles and fashion Cluster apart from London

Waste management

Quantity of waste and recycling In the retail market per year

Source: Business Waste, 2022; Wrap Textiles Market Situation Report, 2019

General Retail waste 16,838 tonnes/year in UK

Recycling

Source: Business Waste, 2022; Wrap Textiles Market Situation Report, 2019

Textile waste

921,000 tonnes/year

67%

Of used textiles were collected for re-use and recycling in 2018.

33%

Used clothing ended up in the household residual waste in 2017



Textiles 2030

Roadmap that brings together organisations from across the clothing and textiles sector in the UK to collaborate on making rapid, science-based progress on climate action and on making the move to a more circular system.

Fast Fashion

Fast Fashion in Leicester and Leicestershire

Source: Times hemp company, 2017; Euronews, 2020; Ethical consumer, 2020



75-80% Of garment production represents fast fashion in Leicester

Sheep Bluefaced Leicester

Source: National Sheep Association, 2021

- The softest of the UK
- Their fleece is not very heavy
- Staple length and structure



The Welsh Mule • Breeding ewe



West Yorkshire Spinners



Garthenor



UK Alpaca



Garthenor

Doulton Border Leicester

Enterprises number

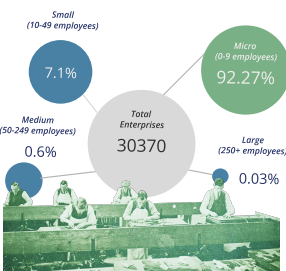
Source: ONS UK Business Counts, 2020; Nomis, 2022



Enterprises

Number of enterprises by size according to the number of employees

Source: Leicestershire County Council, 2017



Traditional Productive Activities: Handicrafts

Artisans located in Leicestershire



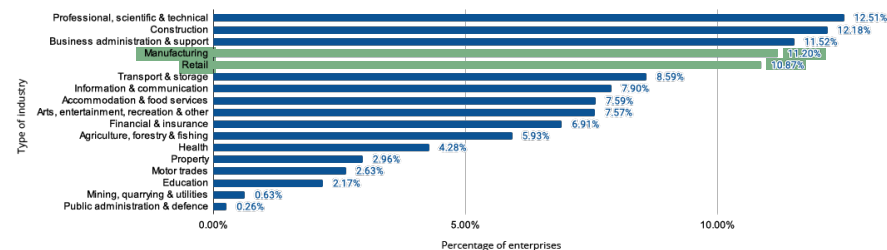
Jewellery

Needlework, knitting and mending

Ceramic and Wax work

Enterprises by type of industry

Source: ONS UK Business Counts



Material innovation

Strategic consulation analysis

Source: Leicester and Leicestershire enterprise partnership, 2021; McKinsey & Company: The state of fashion, 2020

Around

8

times

Fibre-innovation patent applications in 2019 (838) as they did in 2013 (95)

Initiatives include new lines made from hemp, textiles with higher potential for recycling.



Initiatives

Initiatives developed in the territory

Source: University of Leicester

Leicester Innovation Hub

Source: University of Leicester

SCAP: Sustainable Clothing Action Plan

Source: Wrap.org.uk

Textile Training Center

Source: Leicester City Council

Source: Leicester City Council